

## Iowa Schools Joint Investment Trust - Diversified Portfolio Investment Rate Summary

August 2003

Day of the Month:	Sep-02	Oct-02	Nov-02	Dec-02	Jan-03	Feb-03	Mar-03	Apr-03	May-03	Jun-03	Jul-03	Aug-03
1	1.250%	1.208%	1.232%	0.950%	0.822%	0.808%	0.823%	0.713%	0.691%	0.722%	0.614%	0.546%
2	1.250%	1.194%	1.232%	0.900%	0.843%	0.808%	0.823%	0.684%	0.673%	0.708%	0.501%	0.546%
3	1.270%	1.191%	1.232%	0.880%	0.827%	0.808%	0.814%	0.704%	0.673%	0.683%	0.514%	0.546%
4	1.269%	1.179%	1.203%	0.857%	0.827%	0.786%	0.775%	0.679%	0.673%	0.666%	0.514%	0.524%
5	1.205%	1.179%	1.159%	0.885%	0.827%	0.772%	0.767%	0.679%	0.679%	0.686%	0.514%	0.507%
6	1.177%	1.179%	1.092%	0.878%	0.823%	0.789%	0.779%	0.679%	0.645%	0.682%	0.514%	0.447%
7	1.177%	1.185%	0.982%	0.878%	0.809%	0.766%	0.741%	0.693%	0.675%	0.682%	0.531%	0.485%
8	1.177%	1.185%	0.954%	0.878%	0.811%	0.766%	0.741%	0.689%	0.680%	0.682%	0.542%	0.455%
9	1.215%	1.185%	0.954%	0.864%	0.831%	0.766%	0.741%	0.682%	0.678%	0.679%	0.502%	0.455%
10	1.213%	1.189%	0.954%	0.868%	0.821%	0.783%	0.750%	0.701%	0.678%	0.679%	0.505%	0.455%
11	1.214%	1.186%	0.954%	0.873%	0.821%	0.785%	0.745%	0.688%	0.678%	0.682%	0.489%	0.500%
12	1.218%	1.186%	0.977%	0.878%	0.821%	0.775%	0.735%	0.688%	0.691%	0.672%	0.489%	0.499%
13	1.167%	1.186%	0.961%	0.874%	0.832%	0.781%	0.755%	0.688%	0.683%	0.666%	0.489%	0.483%
14	1.167%	1.186%	0.954%	0.874%	0.828%	0.777%	0.767%	0.709%	0.684%	0.666%	0.509%	0.513%
15	1.167%	1.239%	0.993%	0.874%	0.836%	0.777%	0.767%	0.741%	0.731%	0.666%	0.576%	0.602%
16	1.228%	1.210%	0.993%	0.887%	0.832%	0.777%	0.767%	0.699%	0.681%	0.705%	0.524%	0.602%
17	1.190%	1.228%	0.993%	0.857%	0.795%	0.777%	0.787%	0.688%	0.681%	0.669%	0.522%	0.602%
18	1.177%	1.198%	0.936%	0.837%	0.795%	0.836%	0.732%	0.688%	0.681%	0.675%	0.506%	0.516%
19	1.173%	1.198%	0.873%	0.835%	0.795%	0.781%	0.699%	0.688%	0.688%	0.672%	0.506%	0.472%
20	1.159%	1.198%	0.879%	0.844%	0.795%	0.782%	0.711%	0.688%	0.684%	0.641%	0.506%	0.400%
21	1.159%	1.221%	0.903%	0.844%	0.817%	0.766%	0.682%	0.686%	0.683%	0.641%	0.518%	0.461%
22	1.159%	1.207%	0.915%	0.844%	0.824%	0.766%	0.682%	0.680%	0.680%	0.641%	0.515%	0.436%
23	1.183%	1.206%	0.915%	0.839%	0.809%	0.766%	0.682%	0.680%	0.675%	0.650%	0.521%	0.436%
24	1.181%	1.219%	0.915%	0.843%	0.779%	0.776%	0.694%	0.687%	0.675%	0.594%	0.532%	0.436%
25	1.183%	1.219%	0.892%	0.843%	0.779%	0.776%	0.675%	0.672%	0.675%	0.481%	0.531%	0.480%
26	1.202%	1.219%	0.920%	0.836%	0.779%	0.788%	0.695%	0.672%	0.675%	0.556%	0.531%	0.484%
27	1.200%	1.219%	0.905%	0.839%	0.791%	0.800%	0.710%	0.672%	0.692%	0.550%	0.531%	0.491%
28	1.200%	1.233%	0.905%	0.839%	0.802%	0.823%	0.724%	0.697%	0.703%	0.550%	0.534%	0.493%
29	1.200%	1.239%	0.950%	0.839%	0.788%	-----	0.724%	0.704%	0.706%	0.550%	0.554%	0.506%
30	1.237%	1.248%	0.950%	0.841%	0.795%	-----	0.724%	0.734%	0.722%	0.629%	0.561%	0.506%
31	-----	1.273%	-----	0.822%	0.809%	-----	0.745%	-----	0.722%	-----	0.570%	0.506%

Monthly Average Yield												
Diversified-Nominal	1.197%	1.206%	0.989%	0.861%	0.812%	0.784%	0.741%	0.692%	0.685%	0.647%	0.525%	0.497%

An investment in the fund is neither insured nor guaranteed by the FDIC or any other government agency. Although the fund seeks to preserve the value of your investment at \$1.00 per share, it is possible to lose money by investing in the fund. Past performance is no guarantee of future results.

## Iowa Schools Joint Investment Trust - Direct Government Obligation Investment Rate Summary

August 2003

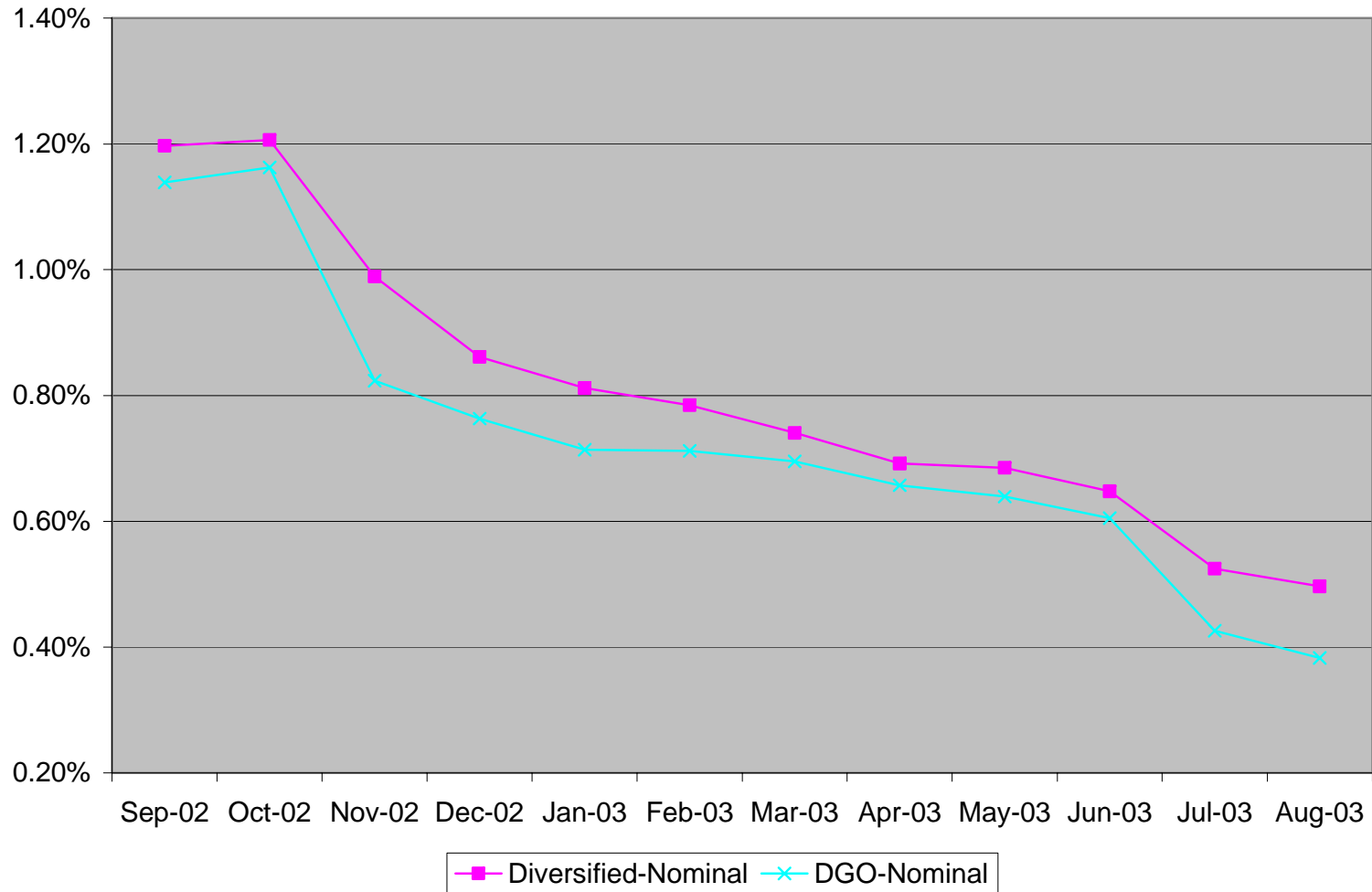
Day of the Month:	Sep-02	Oct-02	Nov-02	Dec-02	Jan-03	Feb-03	Mar-03	Apr-03	May-03	Jun-03	Jul-03	Aug-03
1	1.168%	1.236%	1.185%	0.806%	0.658%	0.743%	0.791%	0.697%	0.651%	0.666%	0.494%	0.433%
2	1.168%	1.165%	1.185%	0.786%	0.783%	0.743%	0.791%	0.660%	0.623%	0.683%	0.396%	0.433%
3	1.221%	1.181%	1.185%	0.747%	0.752%	0.753%	0.782%	0.696%	0.623%	0.654%	0.387%	0.433%
4	1.150%	1.150%	1.140%	0.716%	0.752%	0.693%	0.722%	0.641%	0.623%	0.625%	0.387%	0.404%
5	1.151%	1.150%	1.088%	0.770%	0.752%	0.684%	0.687%	0.641%	0.650%	0.654%	0.387%	0.346%
6	1.103%	1.150%	0.944%	0.755%	0.720%	0.718%	0.724%	0.641%	0.586%	0.644%	0.387%	0.298%
7	1.103%	1.166%	0.792%	0.755%	0.681%	0.659%	0.664%	0.669%	0.629%	0.644%	0.416%	0.346%
8	1.103%	1.149%	0.748%	0.755%	0.689%	0.659%	0.664%	0.660%	0.648%	0.644%	0.396%	0.279%
9	1.142%	1.149%	0.748%	0.755%	0.767%	0.659%	0.664%	0.651%	0.639%	0.654%	0.377%	0.279%
10	1.134%	1.157%	0.748%	0.755%	0.696%	0.705%	0.698%	0.688%	0.639%	0.654%	0.396%	0.279%
11	1.134%	1.149%	0.748%	0.763%	0.696%	0.705%	0.690%	0.660%	0.639%	0.645%	0.377%	0.394%
12	1.142%	1.149%	0.794%	0.778%	0.696%	0.697%	0.664%	0.660%	0.666%	0.664%	0.377%	0.387%
13	1.095%	1.149%	0.786%	0.778%	0.742%	0.705%	0.698%	0.660%	0.639%	0.645%	0.377%	0.377%
14	1.095%	1.149%	0.771%	0.778%	0.711%	0.713%	0.707%	0.697%	0.648%	0.645%	0.406%	0.415%
15	1.095%	1.242%	0.800%	0.778%	0.766%	0.713%	0.707%	0.743%	0.739%	0.645%	0.533%	0.527%
16	1.221%	1.178%	0.800%	0.817%	0.750%	0.713%	0.707%	0.661%	0.642%	0.712%	0.446%	0.527%
17	1.143%	1.160%	0.800%	0.763%	0.680%	0.713%	0.762%	0.642%	0.642%	0.665%	0.436%	0.527%
18	1.111%	1.115%	0.715%	0.759%	0.680%	0.808%	0.652%	0.642%	0.642%	0.645%	0.407%	0.443%
19	1.104%	1.115%	0.655%	0.771%	0.680%	0.697%	0.652%	0.642%	0.632%	0.655%	0.407%	0.368%
20	1.072%	1.115%	0.655%	0.772%	0.680%	0.723%	0.680%	0.642%	0.623%	0.607%	0.407%	0.274%
21	1.072%	1.142%	0.707%	0.772%	0.735%	0.680%	0.634%	0.633%	0.623%	0.607%	0.417%	0.349%
22	1.072%	1.124%	0.699%	0.772%	0.735%	0.680%	0.634%	0.624%	0.623%	0.607%	0.426%	0.312%
23	1.104%	1.129%	0.699%	0.747%	0.725%	0.680%	0.634%	0.614%	0.613%	0.607%	0.422%	0.312%
24	1.127%	1.149%	0.699%	0.771%	0.658%	0.704%	0.661%	0.642%	0.613%	0.529%	0.450%	0.312%
25	1.151%	1.164%	0.740%	0.771%	0.658%	0.704%	0.634%	0.614%	0.613%	0.336%	0.441%	0.378%
26	1.198%	1.164%	0.756%	0.752%	0.658%	0.739%	0.662%	0.614%	0.613%	0.462%	0.441%	0.378%
27	1.190%	1.164%	0.754%	0.760%	0.717%	0.755%	0.698%	0.614%	0.642%	0.472%	0.441%	0.404%
28	1.190%	1.172%	0.754%	0.760%	0.742%	0.791%	0.707%	0.669%	0.662%	0.472%	0.450%	0.396%
29	1.190%	1.202%	0.806%	0.760%	0.683%	-----	0.707%	0.679%	0.657%	0.472%	0.487%	0.415%
30	1.222%	1.202%	0.806%	0.783%	0.734%	-----	0.707%	0.715%	0.666%	0.543%	0.523%	0.415%
31	-----	1.255%	-----	0.658%	0.743%	-----	0.762%	-----	0.666%	-----	0.505%	0.415%

### Monthly Average Yield

DGO-Nominal	1.139%	1.163%	0.824%	0.763%	0.714%	0.712%	0.695%	0.657%	0.639%	0.605%	0.426%	0.382%
-------------	--------	--------	--------	--------	--------	--------	--------	--------	--------	--------	--------	--------

*An investment in the fund is neither insured nor guaranteed by the FDIC or any other government agency. Although the fund seeks to preserve the value of your investment at \$1.00 per share, it is possible to lose money by investing in the fund. Past performance is no guarantee of future results.*

## ISJIT Investment Rate Summary Monthly Average Yield



*An investment in the fund is neither insured nor guaranteed by the FDIC or any other government agency. Although the fund seeks to preserve the value of your investment at \$1.00 per share, it is possible to lose money by investing in the fund. Past performance is no guarantee of future results.*