

Iowa Schools Joint Investment Trust Investment Rate Summary

<u>Date</u>	<u>Diversified Portfolio</u>	<u>Direct Government Obligation Portfolio</u>	<u>Date</u>	<u>Diversified Portfolio</u>	<u>Direct Government Obligation Portfolio</u>
8/1	0.5465%	0.4331%	8/17	0.6023%	0.5270%
8/2	0.5465%	0.4331%	8/18	0.5156%	0.4429%
8/3	0.5465%	0.4331%	8/19	0.4715%	0.3680%
8/4	0.5242%	0.4043%	8/20	0.3996%	0.2745%
8/5	0.5071%	0.3461%	8/21	0.4609%	0.3494%
8/6	0.4471%	0.2980%	8/22	0.4356%	0.3120%
8/7	0.4853%	0.3461%	8/23	0.4356%	0.3120%
8/8	0.4550%	0.2788%	8/24	0.4356%	0.3120%
8/9	0.4550%	0.2788%	8/25	0.4800%	0.3776%
8/10	0.4550%	0.2788%	8/26	0.4841%	0.3776%
8/11	0.5004%	0.3943%	8/27	0.4911%	0.4037%
8/12	0.4991%	0.3868%	8/28	0.4926%	0.3962%
8/13	0.4826%	0.3774%	8/29	0.5057%	0.4150%
8/14	0.5134%	0.4147%	8/30	0.5057%	0.4150%
8/15	0.6023%	0.5270%	8/31	0.5057%	0.4150%
8/16	0.6023%	0.5270%			

ISJIT Quiz Questions

1. What city is home to the world's largest strawberry?
2. Where is the state's smallest city park located?
3. Where is Iowa's oldest water tower still in service at?
4. What is Iowa's oldest city?
5. Which lake is home of the largest bullhead fish?
6. What is the largest body water in the state?
7. Which lake is the largest glacier-made lake in the state?

Visit www.isjit.org
for the answers to these questions!

Public Funds now has a dedicated fax line. Please use the following toll-free fax number for ISJIT: 866-260-0246. Thank you.

NEWS & NOTES:

If you plan to send a purchase wire you **MUST** initiate it at your bank.

Monthly Average Yield

	<u>Diversified Portfolio</u>	<u>DGO</u>
Compound	0.4976%	0.3831%
Nominal	0.4965%	0.3824%

Net Assets

Month's Avg.	\$ 188,645,094
Month's High	\$ 218,008,204
Month's Low	\$ 156,020,692

HOLIDAYS

SEPTEMBER

Monday, September 1 - Labor Day
Fund closed to transactions and participant inquiries.

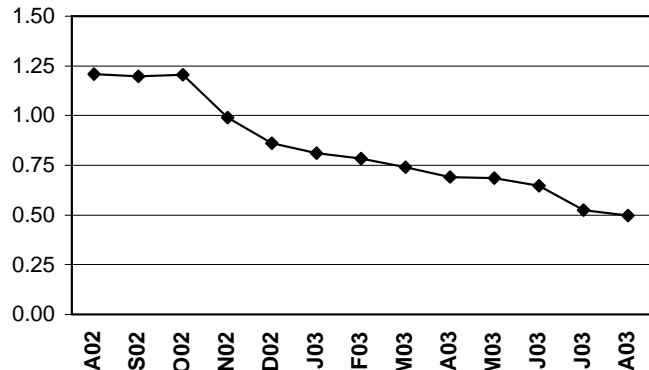
OCTOBER

Monday, October 13 - Columbus Day
Fund closed to transactions but open to participant inquiries.

Is Your Bank Information Changing?

Whether it is because of a merger or better banking deals, this happens in today's business world. ISJIT has produced a form that will allow you to change your local bank information that is linked to your ISJIT account(s). To provide you with top-notch service, we encourage you to notify ISJIT of any changes (account number, routing number, bank name change, etc.) at your local bank. The Change of Bank form is located under Forms and Reports at www.isjit.org.

Iowa Schools Joint Investment Trust August 2002 through August 2003



For current rates or investment assistance, please call the ISJIT Investment Line 1-800-872-0140

The Above Daily Rates Are Calculated Based On A 365-Day Annualization Factor.

*Past performance is not indicative of future performance